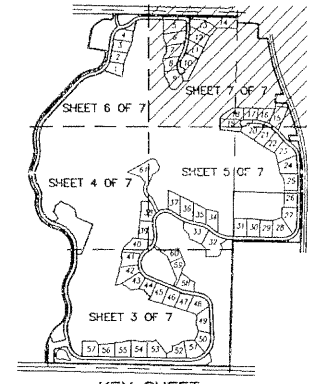
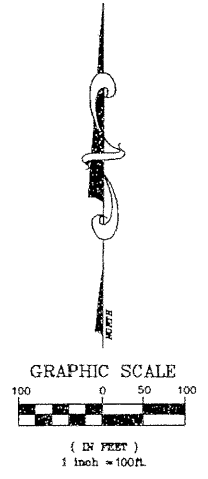
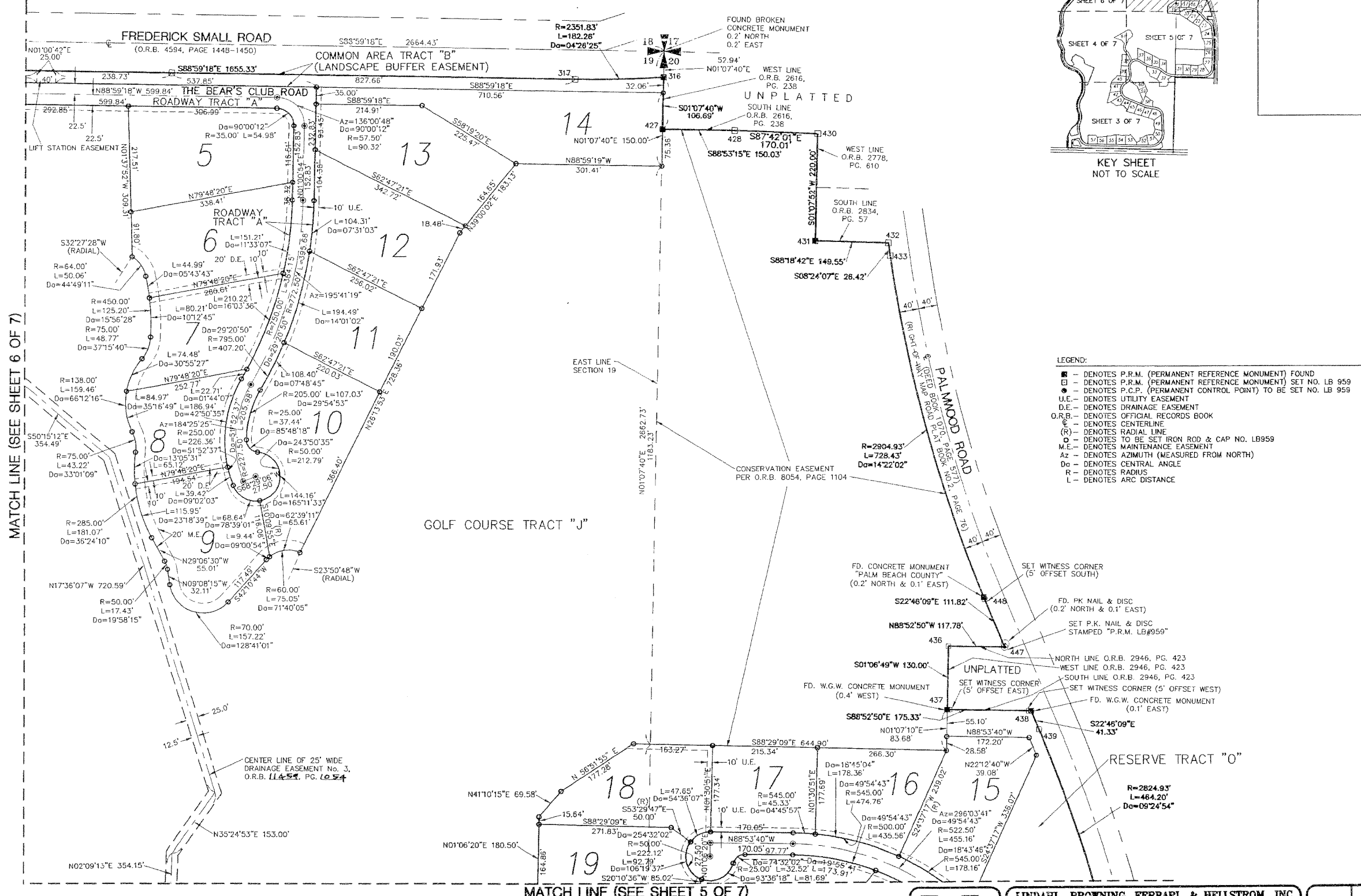


# BEAR'S CLUB, A P.U.D.

LYING IN SECTIONS 19 & 20, TOWNSHIP 41 SOUTH, RANGE 43 EAST  
TOWN OF JUPITER, PALM BEACH COUNTY, FLORIDA  
OCTOBER, 1999



KEY SHEET  
NOT TO SCALE



- LEGEND:**
- - DENOTES P.R.M. (PERMANENT REFERENCE MONUMENT) FOUND
  - - DENOTES P.R.M. (PERMANENT REFERENCE MONUMENT) SET NO. LB 959
  - - DENOTES P.C.P. (PERMANENT CONTROL POINT) TO BE SET NO. LB 959
  - U.E. - DENOTES UTILITY EASEMENT
  - D.E. - DENOTES DRAINAGE EASEMENT
  - O.R.B. - DENOTES OFFICIAL RECORDS BOOK
  - C - DENOTES CENTERLINE
  - (R) - DENOTES RADIAL LINE
  - ⊙ - DENOTES TO BE SET IRON ROD & CAP NO. LB959
  - M.E. - DENOTES MAINTENANCE EASEMENT
  - Az - DENOTES AZIMUTH (MEASURED FROM NORTH)
  - ∠ - DENOTES CENTRAL ANGLE
  - R - DENOTES RADIUS
  - L - DENOTES ARC DISTANCE

MATCH LINE (SEE SHEET 6 OF 7)

MATCH LINE (SEE SHEET 5 OF 7)

**LINDAHL, BROWNING, FERRARI, & HELLSTROM, INC.**  
CONSULTING ENGINEERS, SURVEYORS & MAPPERS

2000 PALM BEACH LAKES BLVD. SUITE 200, PALM BEACH, FL 33409  
305-854-0372

405 N.W. 2ND STREET, SUITE 201, FT. PIERCE, FL 34901  
888-746-7848

7 7  
Sheet of